

EUROPEAN PARLIAMENT

# GYPSUM FORUM

## EU Construction News

N°1 – 9 NOVEMBER 2015

### IN THIS ISSUE

#### EU Policies in Construction

- ▶ Towards a common C&D waste management protocol
- ▶ RPA report on the implementation of the CPR
- ▶ Fitness check on construction

#### Standardisation in Construction

- ▶ Standardisation of the CPR
- ▶ Citation of harmonised standard and EAD
- ▶ Publication on the CE marking
- ▶ CEN/TC 442 BIM

#### EU Funded Project

- ▶ GtoG Project

#### Surveys

- ▶ Health, Well-Being and productivity in offices
- ▶ Design for changing space

### Editorial

*One week before the European Parliament Gypsum Forum, I wanted to send you this newsletter to reflect on the future of the Circular economy package that the Commission plans to release in early December 2015.*

*One important aspect of a circular economy is the recycling of construction, renovation and demolition waste enabling the implementation of a value chain in Member States (deconstruction-collection-recycling and new products). The GtoG project is a good example of this approach.*

*We also need to think about other aspects of resource efficiency such as adaptable and flexible buildings. These can use the same space in different ways without demolishing the building.*

*Design for deconstruction and design for flexibility of the interior space is highly important.*

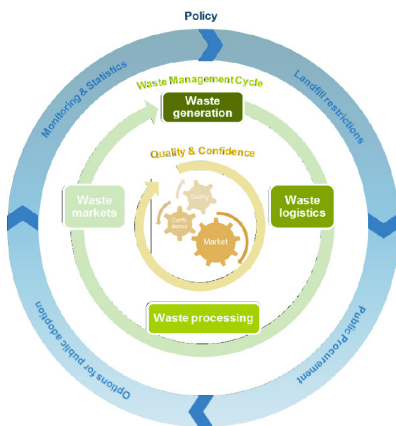
*I hope that you will be present at the Forum on 17 November 2015 from 9h15 to 13h00.*

Julie Girling  
MEP  
President of the Forum



## EU Policies in Construction

### Towards a Common C&D Waste Management Protocol



DG GROW organized a meeting on the above-mentioned on 26 June 2015.

A Kick off meeting document was produced.

The aim of the proposed solution is to address the problem of limited confidence about the quality and performance of processed C&D waste in the EU market. It will do so by increasing transparency in the market on the C&D waste management process.

The overall aim is to develop a common set of principles, which are applicable in the entire EU and based on the highest common standards in each stage of the waste management chain that would be recognised in all Member States.

The protocol should be ready by May 2016 with a validation workshop in June 2016.

### RPA Report on the implementation of the CPR

The consultancy RPA is about to issue the final report on the implementation of the CPR to the EC. This study will be taken into account for the development of the EC report on the same topic to be presented in April next year to the European Parliament and Council.

The main conclusions of the report are the following:

- Need to reduce CE marking to simplify duplication of information already contained in the Declaration of Performance (DoP);
- Assess quality/national marks to see if these create barriers to trade and develop prevention systems;
- Clarify the use of Article 5, 37 and 38 on simplified procedures, including the development of examples and guidance;
- Improve market surveillance in Europe.

The report will be soon published

### Fitness Check on Construction

The EC consultant's study should provide factual evidence regarding the effects, both positive and negative, of EU legislation on the construction sector, with special emphasis on the impacts on competitiveness and sustainability. The Study should not provide indications regarding possible reform options, an aspect that will be handled directly by the Commission.

Having looked at the EU legislation on Internal Market and Energy Efficiency over the 2004-2014, the study now proposes the following binding acts for further analysis:

- **Construction Products Regulation**
- Professional Qualifications Directive;
- Services Directive;
- Late Payment Directive;
- Energy Efficiency Directive
- Energy Performance of Buildings Directive;
- Ecodesign Directive;
- Energy Labeling Directive.

The second fitness check study will focus on environmental and health and safety legislation. The contract should start in November 2015 and end in May 2016. The EC will then publish a staff working document at the end of 2016 to promote the findings of these studies.

## Standardisation

### Standardisation of the CPR

On 28 April 2015, Construction Products Europe organised a workshop to discuss standardisation activities under the framework of the Construction Products Regulation (CPR). Over 60 experts were in attendance. They are active in CEN technical committees for various construction products. Overall, the debate focused on the revision of harmonised standards (HeN).

The morning session was dedicated to the CEN standardisation protocol and the identification of core issues related to the CPR implementation in standards. In their presentations, Eric Winnepeninckx (FIEC) and Antonio Caballero (Construction Products Europe) underlined the gaps between the information required by contractors and the legal requirements that have to be met by producers. This led to a fruitful open debate with the experts.

This report presents the outcome of the workshop in the form of a list of issues to be addressed urgently by all concerned parties. It is a working document to be used by all stakeholders, standardisation bodies and regulators to improve construction products standards under the CPR.

Please click on the link to have the full report:

<http://www.construction-products.eu/publication.aspx?doc=373>

### Citation of Harmonised Standard and EAD

The first list of EAD has been published in the OJEU both the list and the documents are accesible online through the following links

The list of harmonised standards was also updated and the references are published din the OJ

To obtain the new list, please contact: [info@eurogypsum.org](mailto:info@eurogypsum.org)

## Publication on the CE marking



DG GROW has published the electronic brochure explaining CE marking of construction products. The document is now available in English but it is being translated into other languages.

To download:

[http://ec.europa.eu/growth/sectors/construction/product-regulation/index\\_en.htm](http://ec.europa.eu/growth/sectors/construction/product-regulation/index_en.htm)

### CEN/TC 442 BIM

On 16th of September 2015, Mr Rooth and Ms Landfald, chairman and secretary, launched the new CEN TC for BIM standardisation.

The scope will cover: *"Standardization in the field of structured semantic life-cycle information for the built environment.*

*The Committee will develop a structured set of standards, specifications and reports which specify methodologies to define, describe, exchange, monitor, record and securely handle asset data, semantics and processes with links to geospatial and other external data."*

One of the most interesting projects is the development of the semantics for construction products based on harmonized standards. The source of information chosen is annex ZA of harmonised standards and the plan is the development of a common structure linking products, essential characteristics and additional information.

The working groups already established are:

- WG1 Strategy and planning (secretariat: United Kingdom)
- WG2 Exchange information (secretariat: Germany)
- WG3 Information delivery specification (secretariat: Austria)
- WG4 Data dictionary (secretariat: France)

The group is looking for volunteers to be liaisons with relevant TCs for the group including CEN/TC 350 and CEN/TC 351.

Next meetings will take place in Oslo on 15-16 February 2016 and in Lisbon on 20-21 June 2016.

On 17 November 2015, within the umbrella of the European Parliament Gypsum Forum, the partners of the GtoG will present the results of a collaborative value chain to increase the recycling of plasterboard waste.

The partners will cover

1. The deconstruction of a building to recuperate the plasterboard waste;
2. The sorting on the demolition site;
3. The transport to the recycling facility;
4. The processing of the plasterboard waste (separating the paper from the plaster);
5. The testing of the recycled gypsum;
6. The reincorporation into the manufacturing up to 30%.
7. The indicators (economic, social)

During the project, the partners met many stakeholders and presented the project to many associations. The latter will thus present their views on the how to reach an effective circular economy in their sector and how to help industry to achieve this goals.

For the programme of the event, please click on:

<http://www.europeanparliamentgypsumforum.eu/forum-2015/>

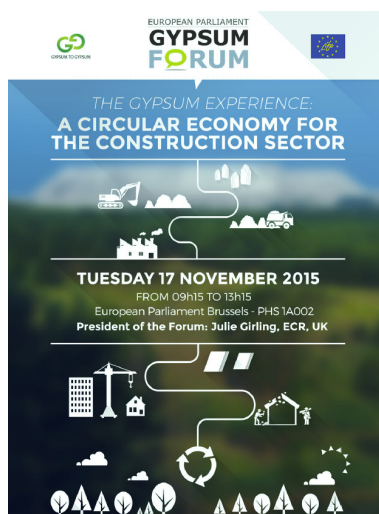
To download the deliverables, please click on the following link:

<http://gypsumto gypsum.org/news/download-the-gtoq-reports-now/>

**Conference room:** PHS 1A002

## EU Funded Projects

**GtoG: The path to a circular economy: a European collaborative project between the recycling industry, the demolition sector and the gypsum industry –Life Programme**



## Surveys

### Health, Well-Being and Productivity in Offices

A study by WGBC.

It has long been considered the ultimate yet seemingly out of reach test of the business case for green building: if the human benefits of green building could be reliably quantified this would prove beyond all doubt the ROI for investing in building green.

After all, staff costs, including salaries and benefits, typically account for about 90% of Business operating costs. Therefore what may appear a modest improvement in employee? Health or productivity, can have a huge financial implication for employers – one that is many times larger than any other financial savings associated with an efficiently designed and operated building.

This report does not claim to put this argument completely to rest, but it does put forward the best and latest information on the building design features that are known to have positive impacts on the health, wellbeing and productivity of office building occupants and points to financial implications where possible. Further – and what distinguishes this report from other similar efforts – it provides a high-level framework for building owners, occupiers and their advisors to start tracking the impacts of buildings on employee health, wellbeing and productivity in order to use that information in financial decision-making.

In other words, it sets the groundwork for businesses to begin to answer this tantalizing question as to the true payback for building green.

To be downloaded at:

<http://www.worldqbc.org/activities/health-wellbeing-productivity-offices/>

## Design for changing space

In this electronic/information age, work teams form and reform to meet organizational needs, technological innovations, and changing business relationships. Buildings and interior spaces need to be flexible to anticipate and support this changing nature of work

Within the past few years, designers have sought to create a new generation of "flexible" buildings and workplace environments within buildings that have infrastructures and structures that fully support change while sustaining new technologies, and multi-capable individuals and teams.

The changing nature of work means greater mobility for workers, a multiplicity of workspaces within and external to buildings, greater use of geographically dispersed groups, increased dependence on social networks—and greater pressure to provide for all of these needs and behaviors in a leaner and more agile way. Workplaces have responded with many new options, including more teaming and informal interaction spaces, more supports for virtual individual and group work, more attention to integrating learning into everyday work experience, greater flexibility in work locations, and more focus on fitting the workplace to the work rather than vice versa. Many workplaces are also incorporating spaces that encourage relaxed engagement with colleagues to reduce stress and promote a sense of community.

More on:

[https://www.wbdg.org/design/design\\_change.php](https://www.wbdg.org/design/design_change.php)